



**REPEATIT**

# **Trinity-100 Series**

## **Installation and Operational Guide**

Repeatit AB  
Hamngatan 33  
172 66 Sundbyberg  
Sweden

Tel: +46 8 570 106 66  
Fax: +46 8 570 106 67  
E-mail: [info@repeatit.se](mailto:info@repeatit.se)  
[www.repeatit.se](http://www.repeatit.se)

# Quick start

**Warning** *This product transmits information using microwave radio signals. Installation of fixed outdoor radio links should only be performed by a qualified and trained technician familiar with local radio, electric and safety regulations.*

Before proceeding with the installation verify that the equipment works on the ground. Power up both units and put them between your computer and network access, you should have full communication within a few minutes of powering up the units. (If the units have no internal antenna make sure you place the antenna connectors directly opposite each other.)

The units are pre-configured and paired from factory with the following parameters.

	<b>Master</b>	<b>Client</b>
<b>IP address</b>	10.0.0.1	10.0.0.2
<b>Username</b>	admin	admin
<b>Password</b>	public	public

---

## Installing the link

- Mount the first unit, point it towards the site of the second unit. Power it up and make sure the Power LED is lit and the status LED blinks slowly.
- Mount the second unit. Power it up and adjust it for best signal using the status LED see section 1.9 for details .
- Adjust the first unit for best signal using the Status LED.



- Make sure all cables are secured and connect the link to the network.
- Configure the distance parameters at the master unit to reflect the correct distance between the units.

**Note** *Make sure that the polarization on both units are in the same direction. Unaligned polarization will significantly reduce the signal strength.*



# Contents

<b>1</b>	<b>Installation Guide</b>	<b>4</b>
1.1	Who should use this guide . . . . .	4
1.2	Package contents . . . . .	4
1.3	Additional tools required . . . . .	5
1.4	Unit description . . . . .	5
1.5	Installation . . . . .	6
1.6	Mounting a Trinity unit . . . . .	6
	Mounting instruction for Trinity-116 . . . . .	8
	Mounting instruction for Trinity-123 . . . . .	9
	Mounting instruction for Trinity-100 . . . . .	10
1.7	Ethernet cabling . . . . .	11
1.8	Installing the power supply . . . . .	11
1.9	Finalizing the installation . . . . .	12
	Configuration . . . . .	12
	Alignment . . . . .	12
	Securing the installation . . . . .	13
<b>2</b>	<b>Configuration</b>	<b>14</b>
2.1	Trinity-100 series Configuration concepts . . . . .	14
	Configuration areas . . . . .	14
2.2	Configuring using the Trinity-100 series web interface	15
	Modifying the configuration . . . . .	15
	Applying a new configuration . . . . .	15
	Saving settings to flash memory . . . . .	16
	Rolling back settings . . . . .	17
2.3	Configuration parameters . . . . .	18
	Radio settings . . . . .	19
	Network settings . . . . .	22
	System settings . . . . .	22
<b>3</b>	<b>Unit Operation</b>	<b>24</b>
3.1	Unit status . . . . .	24
	Default view . . . . .	24



---

Extended information . . . . .	24
Status information . . . . .	25
3.2 Link Diagnostic Tools . . . . .	26
Spectrum analyzer . . . . .	26
Speed test . . . . .	27
3.3 Firmware upgrading . . . . .	28
3.4 Restore to defaults . . . . .	28
<b>4 Support</b>	<b>29</b>
<b>5 Technical Specifications</b>	<b>30</b>
<b>6 Usage restrictions and legal information</b>	<b>31</b>



# Installation Guide

---

## 1.1 Who should use this guide

Installing fixed outdoor radio links requires technical expertise and should only be carried out by a technician.

You should only attempt to install and configure the Trinity link if you have

- Experience with mounting outdoor radio equipment and antenna installation.
- An understanding, or common knowledge, of network equipment.
- Made sure that the installation site is suitable and complies with local radio, electrical and safety regulations.

**Warning** *Radio regulations differs between countries and all options and/or combinations in this manual might not be allowed in your current region. Local radio regulations or legislation may impose restriction on allowed usage such as*

- *Allowed radio channel frequencies for outdoor usage.*
- *Maximum allowed EIRP.*

*You are responsible for that your installation complies with local radio, electrical and safety regulations.*

---

## 1.2 Package contents

Please inspect the package before proceeding with the installation. Your Trinity Lite package should contain the following content

- Trinity-116M/116M Plus
  - 2 Trinity-116 units with integrated dual polarization 17 dBi antenna
  - 2 Mounting kits



- 2 PoE with power adapter for your local region
- Trinity-100 Lite
  - 2 Trinity-100 Lite units with N-female antenna connector
  - 2 Mounting kits
  - 2 PoE with power adapter for your local region
  - 2 IP65 RJ-45 connectors
- Trinity-116 Lite
  - 2 Trinity-116 Lite units with integrated 16 dBi antenna
  - 2 Mounting kits
  - 2 PoE with power adapter for your local region
- Trinity-123 Lite
  - 2 Trinity-123 Lite units with integrated 23 dBi antenna
  - 2 Mounting kits
  - 2 PoE with power adapter for your local region
  - 2 IP65 RJ-45 connectors

---

### 1.3 Additional tools required

Depending on the conditions at the installation site other tools might be needed, including, but not limited to

- Cat5E Ethernet cable
- RJ-45 crimp tool and RJ-45 connectors if not using a pre-assembled Ethernet cable
- An adjustable wrench
- Drill for wall mounting
- Ground cables
- Cable ties to secure cabling

---

### 1.4 Unit description

There are three LEDs, power, status and Ethernet link/activity.



LED	Colour	Status	
Power (P)	Green	On	Power on
Status (S)	Green	Flashing	Signal strength pattern
		Blinking	Firmware upgrade in progress
Ethernet (E)	Green	On/blinking	Reflects Ethernet traffic and link status
		Off	No Ethernet link

## 1.5 Installation

Installing a Trinity-100 series system consists of the steps outlined below, each step is explained more thoroughly in the following sections. The Trinity link system consists of two separate Trinity units, one master unit and one slave unit, the installation steps needs to be carried out for both units.

1. Mount the Trinity unit and antenna (if applicable) at site A.
2. Install the PoE at an indoor location where power and network equipment is available.
3. Run Ethernet cable from the PoE to the mounted Trinity unit.
4. Repeat the above steps for the unit at site B.
5. Align antennas for best signal reception.
6. For optimal link throughput the following parameters must be updated in the web interface
  - Distance - should accurately reflect the distance in kilometers between the units.

## 1.6 Mounting a Trinity unit

A Trinity unit should preferably be mounted on a mast, if this is not possible due to the surrounding area it could also be mounted directly on to a wall. Make sure there are no obstacles directly in front of or near the unit.

**Note** *The Trinity units should be mounted with their antennas having a clear line of sight between them!*





Observe the antenna polarization and make sure they match at both installation sites, failure to install the units with matching polarization will result in radio signal degradation.

Use the supplied mounting kit to securely mount the units at both locations, make sure the mounting brackets are connected to ground.

**Tip** *Do not tightly secure the unit and/or antenna until the alignment process is complete*



## Mounting instruction for Trinity-116

The Trinity-116 units are supplied with mounting brackets for both wall and pole mounting.

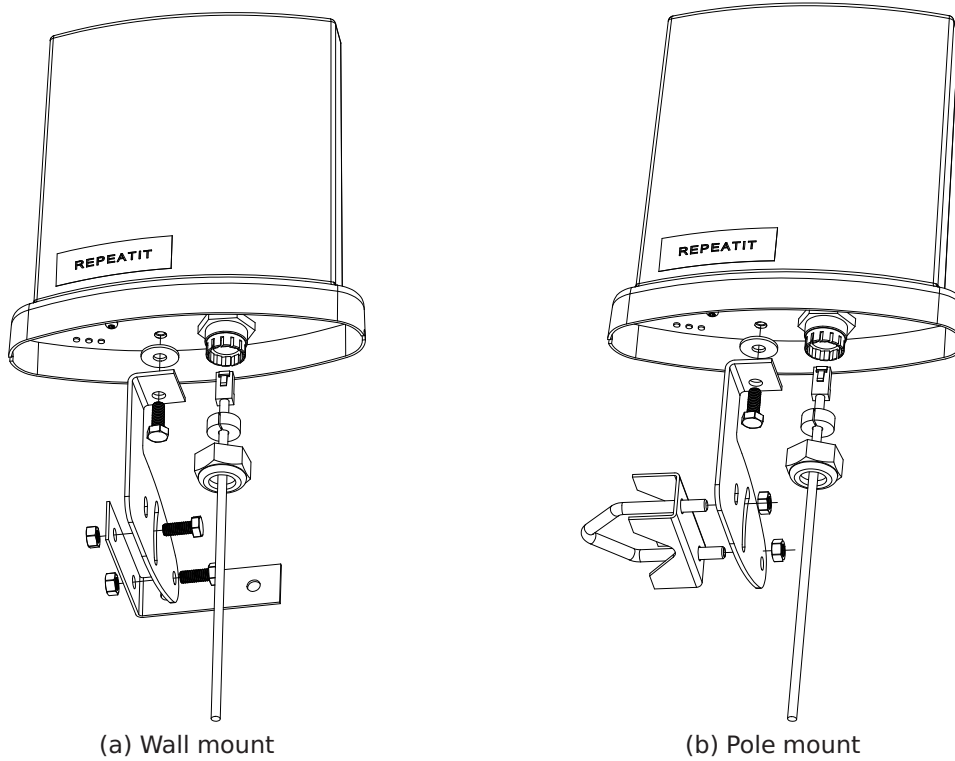


Figure 1.1: Trinity-116 mounting options

### Wall mounting

1. Attach the tilt bracket on to the unit using one supplied M8 screw and the rubber washer.
2. Attach the wall mount bracket on to the desired wall (hardware not supplied).
3. Attach the unit with its tilt bracket on to the wall mounted bracket using two supplied M8 screws and bolts.

See figure 1.1 for mounting details.

### Pole mounting

1. Attach the tilt bracket on to the unit using one supplied M8 screw and the rubber washer.



2. Run the pole clamp around the mounting pole.
3. Run the pole clamp through the pole bracket and attach using the supplied bolts.

See figure 1.1 for mounting details.

### **RJ-45 connector assembly**

The Trinity-116 lite has a built-in and pre-assembled protective casing to which you directly can connect the Ethernet cable.

1. Unscrew the top of the connector casing.
2. Use a screwdriver or another pointy object to remove the rubber gasket mounted on the inside of the connector.
3. Run the Ethernet cable through the connector casing.
4. Insert the Ethernet connector into the RJ-45 slot inside the unit.
5. Wrap the rubber gasket around the Ethernet cable on and firmly push it into the connector slot.
6. Firmly fasten the connector casing back on to the unit.

### **Mounting instruction for Trinity-123**

See the supplied document for detailed mounting instructions.

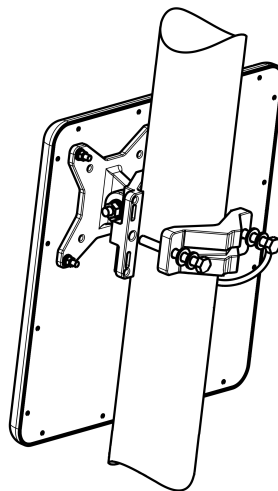


Figure 1.2: Trinity-123 pole mounting



## Mounting instruction for Trinity-100

The Trinity-100 is supplied with mounting brackets for pole mounting.

1. Run the pole clamps around the mounting pole.
2. Run the pole clamps through the mounting brackets.
3. Attach the pole clamps to the unit using the supplied screws.

## RJ-45 connector assembly for Trinity-123 and Trinity-100

The connector casing is delivered assembled, unscrew the connector as shown in figure 1.3 (you do not need to remove the gasket (4)).

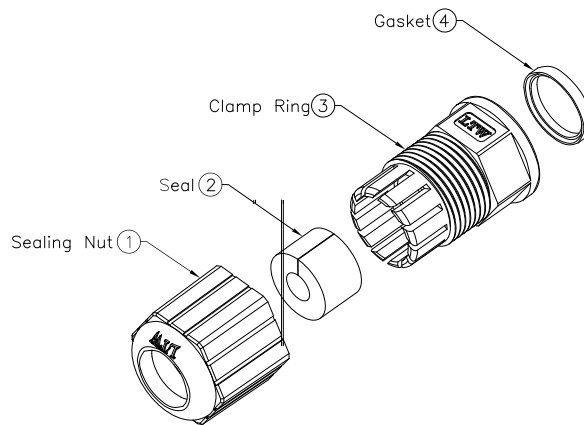


Figure 1.3: IP65 RJ-45 Connector

1. Run the end of the Ethernet cable with the RJ-45 connector first through the sealing nut (1) from the bottom.
2. Continue to run the end through the clamp ring (3).
3. Add the seal (2) around the wire in between the sealing nut and the clamp ring.
4. Push the seal into the clamp ring.
5. Fasten the sealing nut to the clamp ring, make sure the seal is tight.
6. Insert the RJ-45 connector into the Trinity unit.
7. Screw the assembled IP65 casing on to the Trinity unit.



## 1.7 Ethernet cabling

Run Cat5E Ethernet cable from the location where the PoE is to be installed to the location of the Trinity unit, allow for some slack on the wire to avoid putting extra strain on the Ethernet connectors. Make sure the Ethernet cable you are using is rated for outdoor use to avoid decreased cable life time.

### RJ-45 pin-out

If you are not using a pre-assembled Ethernet cable, apply the RJ-45 connectors on to the both ends of the cable using the pin-out table and diagram below.

PoE	Wire	Colour	Function	RJ-45
1	Twisted pair	White/Green	Ethernet (RxN)	1
2	Twisted pair	Green	RxT	2
3	Twisted pair	White/Orange	Ethernet (TxT)	3
4	Twisted pair	Orange	Ethernet (TxN)	6
5	Twisted pair	Blue	Power (+)	4
6	Twisted pair	White/Blue	Power (+)	5
7	Twisted pair	White/Brown	Power (-)	7
8	Twisted pair	Brown	Power (-)	8

## 1.8 Installing the power supply

Install the supplied PoE indoor where power and other network equipment is available. The PoE can be located at most 100 meters from the unit.

**Note** *The supplied PoE-adapter (Power-over-Ethernet) is strictly for indoor use only!*

**Tip** *Make a loop on the Ethernet cable indoors near the PoE to allow water to drain more easily from the cable, before reaching the PoEs unprotected Ethernet connector!*

Connect the PoE port marked "P+DATA OUT" to the Trinity unit using an outdoor-rated Cat5E Ethernet cable. The PoE port marked "DATA IN" should be connected to user supplied network equipment such as a switch or router.



**Note** *The Trinity unit will boot as soon as the Ethernet cable from the PoE is connected!*

---

## 1.9 Finalizing the installation

Once both units are mounted they need to be aligned for proper operation. The Trinity system assists you in doing this using external visual signals and a web interface that shows detailed information about the link status and its signal strength.

### Configuration

The Trinity units come pre-configured and should connect to each other automatically. For optimal throughput you are recommended to accurately configure the distance between the unit using the web interface on the master unit.

You should also modify the IP-configuration on both units to reflect your network setup.

### Alignment

Make sure the units are roughly aligned using sight or a compass before proceeding with this step. On on site A (or B), slowly move the antenna towards site B (or A). Use one of the alignment tools to find the optimal alignment.

#### External visual indication

The LED (if enabled) indicates the current signal strength with a set of pulses followed by a short pause.

**Note** *The alignment LED is enabled by default.*

<b>Pulses</b>	<b>from dBm</b>	<b>to dBm</b>
1 pulse	0	9
2 pulses	10	14
3 pulses	15	19
4 pulses	20	24
5 pulses	25	29
6 pulses	30	



**Web interface**

The web interface contains status indicators for both link status and signal strength.

<b>Color</b>	<b>Status</b>
Green	Very good signal strength
Yellow/green	Good signal strength
Orange	Bad signal strength
Red	No link

**Securing the installation**

When the Trinity link is running and the antennas have been properly aligned the units must be secured in place to avoid the units moving due to strong winds. If the units become misaligned the link might be lost.

Tightly fasten the mounting brackets to secure the unit in place, make sure the brackets and chassis are connected to ground. Secure Ethernet and antenna cabling using cable ties to avoid unnecessary wear on the cabling material and connectors.



# Configuration

The Trinity-100 series units can be configured via a web interface built-in into the unit or using the Repeatit network management system RCS.

---

## 2.1 Trinity-100 series Configuration concepts

The Trinity-100 series features an advanced configuration management system with the ability to roll back to previously working settings, even with automatic rollback in case of link loss. This helps you to try out different settings to optimize your link throughput while minimizing the risk of a disconnected link.

### Configuration areas

A Trinity-100 series unit has several what is called "configuration areas", these areas hold configuration data and each area contains one unique configuration instance. Some areas contain different data depending on the unit status whilst some only contain static configuration data that never change.

The following different areas exist within a Trinity-100 series system

#### **In-active**

When you modify the configuration via the web interface all changes end up in this area. This is only a place holder until you choose to apply the new configuration, until that time you can rollback and/or keep modifying any setting without disrupting the unit or link status.

#### **Active**

This area always contains the current settings in use by the unit.

#### **Stored**

Contains the configuration currently written to flash, this might differ from both the in-active and active configuration.





### Factory defaults

Static bare basic configuration.

**Note** *The factory default IP address is 10.0.0.1, the default username is "admin" and default password is "public".*

---

## 2.2 Configuring using the Trinity-100 series web interface

Both units in your Trinity-100 series link can be fully configured using the built-in web interface. The following section will guide you through how to use the interface to modify the link configuration, please refer to section 2.3 for details on the available configuration parameters.

All configuration options in the Trinity-100 series can be found under the tab marked "Configuration" in the web interface.

### Modifying the configuration

To modify a configuration parameter, change its value and press the button labeled "Set". This will save your changes to the "inactive" configuration area, but will *not* modify the running configuration of the unit. This means that the unit will continue to operate while you are modifying your configuration.

**Tip** *Clicking the question mark next to an option will bring up an instant help dialog with a brief description of the parameter.*

After modifying a setting the current value in use by the unit will be shown to the right of the option. Attempting to set an invalid value, such as a too large distance value or an invalid IP-address, the configuration modification will fail and the field containing invalid data will be highlighted in red.

### Applying a new configuration

When you have performed your required modifications you need to "apply" the new settings for the unit to use them. This is accomplished by clicking the "Apply" button in the status pane to the left of the settings, as shown in figure 2.1.

When you click the "Apply" button the unit will attempt to re-configure itself with the new settings. If the apply operation is successful the unit will be running with your new settings, if the



The screenshot shows a web-based configuration interface for the Trinity-100 Series. It is divided into two main sections: (a) 'After set' and (b) 'Configuration'.

**(a) After set:** This section contains a 'Load configuration' area with a dropdown menu set to 'Active settings' and a 'Load' button. Below this is a 'Status' section with a message: 'Configuration has been modified! An apply is required for changes to take effect!'. There is a checkbox for 'Safe apply' followed by a text input field containing '5' and the label 'min'. At the bottom of this section are two buttons: 'Apply' and 'Reboot'.

**(b) Configuration:** This section is divided into 'Basic settings' and 'Advanced settings'.  
**Basic settings:** Mode (master), Remote MAC (02:08:1e:03:10:7f), Channel (Auto channel), Transmit rate (Auto rate (Single stream)), Link ID (empty), Passphrase (secret) with a note '(trinity100lite)'.  
**Advanced settings:** Regulatory domain (Sweden), Channel bandwidth (20 MHz), Transmit power (17), Antenna gain (16), Distance (1), CAC Policy (Regulatory). A 'Set' button is located at the bottom of this section.

Figure 2.1: Configuration after set

apply fails the unit will automatically revert back to the previous working settings.

If you happen to make a configuration mistake you are able to manually roll back to a previous working configuration by using the "Load configuration" functionality, see section 2.2 more information.

**Note** *Apply does not permanently save settings to flash!*

## Saving settings to flash memory

Once you have a configuration running you are satisfied with you need to save this to flash so that the configuration is retained across a power failure or reboot of the unit. Saving settings to flash can only be done after you have successfully applied a new configuration, this is to protect the unit from miss-configuration.

**Note** *Settings will be lost if you do not save your configuration to flash!*

When the unit detect that it is running with a configuration that has not been saved to flash it will show a "Save" button in the left status pane as illustrated by figure 2.2.



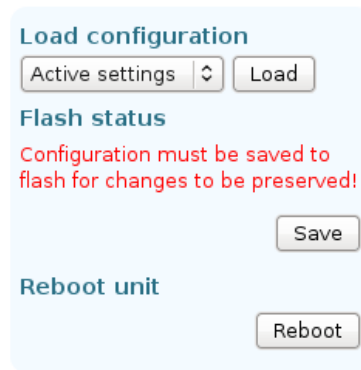


Figure 2.2: Saving configuration to flash

## Rolling back settings

The Trinity-100 series system allows you to roll back settings if you happen to miss-configure a unit. To rollback settings use the "Load configuration" feature present in the left status pane (shown in figure 2.3).



Figure 2.3: Load configuration drop-down

The drop-down box contains a list of available configuration areas you are able to load existing configurations from. For example, to revert back to the settings stored on flash you would select "Stored settings" from the drop-down list and press the "Load" button.

Loading settings will place them in the "In-active" area, you can then "Apply" these these settings as with any other configuration.

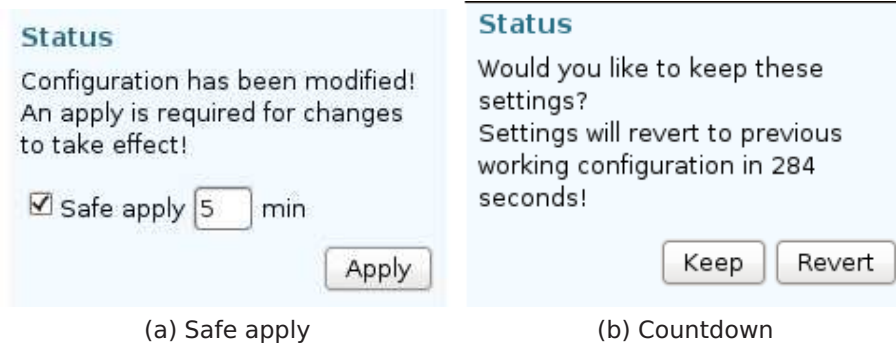
## Automatic rollback of settings

When configuring a remote unit over its own radio link you always risk losing the connection in case of a miss-configuration. The Trinity-100 series unit assist you in this aspect by providing the option to automatically rollback to previous working settings after a specific amount of time.

**Tip** Use automatic rollback when configuring a unit over its own radio link!

To use this feature check the box marked "Safe apply" in the





(a) Safe apply

(b) Countdown

Figure 2.4: Automatic configuration rollback

left status pane before pressing the "Apply" button. You can select a different timeout than the default 5 minute by changing the value in the box next to the checkbox.

When you press "Apply" the unit will reconfigure itself with the new settings and the buttons "Keep" and "Revert" will appear next to a countdown timer. Once the timer expires the unit will automatically revert back to its previous settings, to keep your settings you need to press the "Keep" button. If you want to revert your changes before the timer expires you can do so by pressing "Revert".

### Restore to default

You can load the "Factory defaults" to restore the unit to a basic working condition.

It is also possible to restore the unit to default settings in one action without the need for an explicit "Apply" and "Save" by using the dedicated "Restore to default" function available on the "Admin" tab or by using the Repeatit RTD client software, see section 3.4 for more information on this.

---

## 2.3 Configuration parameters

Numerous configuration parameters can be set, some are only available on "master" units. The following section describes the available configuration parameters in more detail.



## Radio settings

The radio settings control parameters related to the radio interface.

### Mode

A unit can operate in two different modes, master or slave. A master is passive while the client is the active participant.

**Master** Defines the channel to operate on and the distance to its slave. Which slave that is allowed to connect is determined by the remote MAC address setting.

**Client** The slave will attempt to connect to any master that matches its configured remote MAC address.

### Remote MAC

Radio device MAC address of the remote peer. Settings this will ensure that your unit only connects to a specific peer. If left blank (00:00:00:00:00:00) the Trinity will use the Link ID and RSSI values of surrounding units to select which peer to connect to.

**Note** *If left blank it is recommended to use a unique Link ID*

### Channel

Specifies which radio channel that should be used. Only required on the "master" side.

**Note** *For European ETSI domains the frequency range 5.15-5.35 GHz is solely for indoor use. It is not allowed to use channels within this band in an outdoor installation.*

### Transmit rate

Controls the radio modulation used for transmission, which affects the transmission rate. If "Channel bandwidth" is changed the same modulation will be used but the display will be updated to show the actual data rate. Only required on the "master" side.

### Link ID

An arbitrary, 32 character long, identifier that allows you to differentiate between multiple Trinity-100 links.

**Note** *The Link ID Must be equal on both units*



**Encryption key**

Specifies an encryption key phrase used for the AES-128 bit encryption of the radio traffic.

**Note** *It is not possible to disable encryption and the key must be equal on both units*

**Regulatory domain**

The frequency band is divided up into channels, with each local regulatory agency defining what is permitted for use in its area. This affects which channels that are available and the max TX power.

**Warning** *While it is possible to choose a different regulatory domain that enables the use of other frequencies, it is at all times the customers responsibility to ensure that the correct regulatory domain is selected for the country of operation.*

- *The installation must comply with local radio regulations regarding allowed frequencies.*
- *Repeatit AB and its resellers or distributors are not liable for any damage or violation of government regulations that may arise from failing to comply with these guidelines.*

**Channel bandwidth**

How much of the frequency band should be used for a single channel. Setting this to 40MHz (on units supporting 40MHz) will increase the available transmit rate, but each channel will require twice the spectrum width.

**Transmit power**

Effect in dBm of the signal transmitted from the radio device. Most regulatory domains have a limit on how high the transmit effect plus antenna gain may be (EIRP).

The EIRP is calculated by adding the antenna gain to the configured transmit power. Example, Trinity 216 with 16 dBm antenna and 14 dBm TX power results in a  $14 + 16 = 30dBm$  EIRP.



**Warning** *The user must assure that the maximum local EIRP limits are not exceeded, to achieve this the output power may have to be reduced. The device is by default configured to with a transmit power setting to meet a EIRP limit of 30 dBm. Please consult your local regulatory agency or a Repeatit sales partner for information on power limits in your area.*

- *The installation must comply with local radio regulations regarding maximum allowed EIRP.*
- *Repeatit AB and its resellers or distributors are not liable for any damage or violation of government regulations that may arise from failing to comply with these guidelines.*

### **Antenna gain**

This should be set to the gain in dBm of the connected antenna. Only applicable for units with external antenna.

### **Distance**

For best throughput this should be set to the physical distance in kilometers between the Trinity-100 series units. Only required on the "master" side.

### **CAC Policy**

This will allow you to control the DFS CAC (Channel Availability Check, i.e the amount of time to listen for radar before using a channel) policy. Selecting "Regulatory" will follow the rules according to the selected regulatory domain, this is the recommended setting. Selecting "Custom" will allow you to enter a custom DFS CAC time.

**Note** *Note that in Europe, according to the ETSI EN 301 893 regulation, there is a 10 minute CAC time on the 5.6GHz band due to weather radars.*

**Warning** *Overriding this might violate the regulations in your area! You are required to consult with your local regulatory agency before modifying this setting!*



## Network settings

### IP

IP-address on this Trinity-100 series unit.

### Netmask

IP-netmask to use.

### Gateway

Specifies the default gateway for this unit.

### VLAN

VLAN (IEEE 802.1Q) ID, range 1-4094.

**Note** *Configuring an invalid VLAN ID might result in the loss of Ethernet connectivity if there is a mismatch with your switch configuration.*

### DNS

Specifies one or more nameservers. The default configuration contains two working servers.

### STP (IEEE 802.1D)

Enable/disable the usage of Spanning Tree Protocol (IEEE 802.1D) on the bridge.

### Enable SNMP

Enable SNMP version 2c for monitoring.

### Read-only community

Specify the SNMPv2c read-only community name.

### Read-write community

Specify the SNMPv2c read/write community name.

## System settings

### Unit name

Allows you to specify a custom unit name for easier identification.

### Location

Allows you to specify a descriptive name for the units geographical location.





**Status LED**

Visual signal level/link status indicator. Can be set to pulse mode or disabled. If set to "pulse mode" the LEDs will blink according to the current signal strength.

**Use RCS**

Enable/Disable the use of Repeatits network management system RCS.

**RCS IP**

The IP address of your RCS server.

**RCS SSL Port**

SSL port number your RCS is using. The default port number is 9998.

**NTP**

Enable/disable the usage of NTP (Network Time Protocol) and which NTP servers to use.

**Password**

Controls the password for the web interface.



# Unit Operation

## 3.1 Unit status

The status page is the first page you see when accessing the web-interface of a Trinity-100 Lite series unit. This page gives you a fast overview of the link and unit status.

### Default view

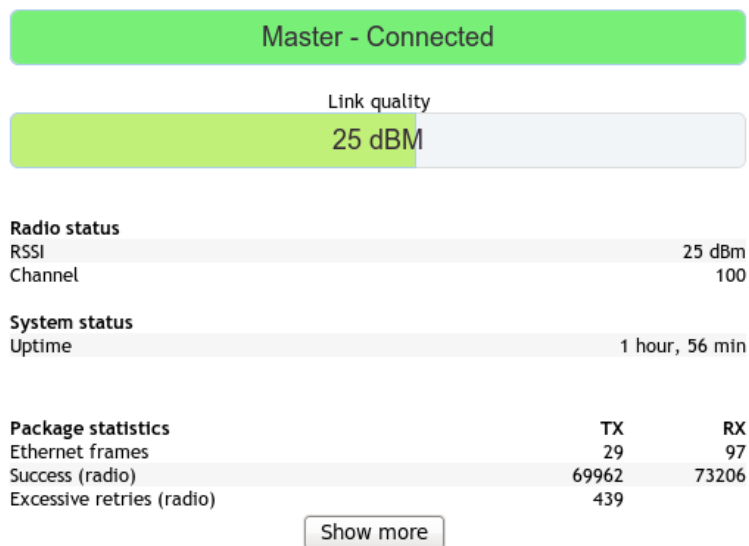


Figure 3.1: Unit status

The default view (see figure 3.1) shows a small selection of status that should tell at a glance that everything is working. When more information is interesting extended information can be accessed by clicking “show more” at the bottom of the page.

### Extended information

The extended information (see figure 3.2) includes the same as the Default view above, a set of diagnostic information and some information useful when configuring the units. You can hide this information again by clicking the “show less” button.



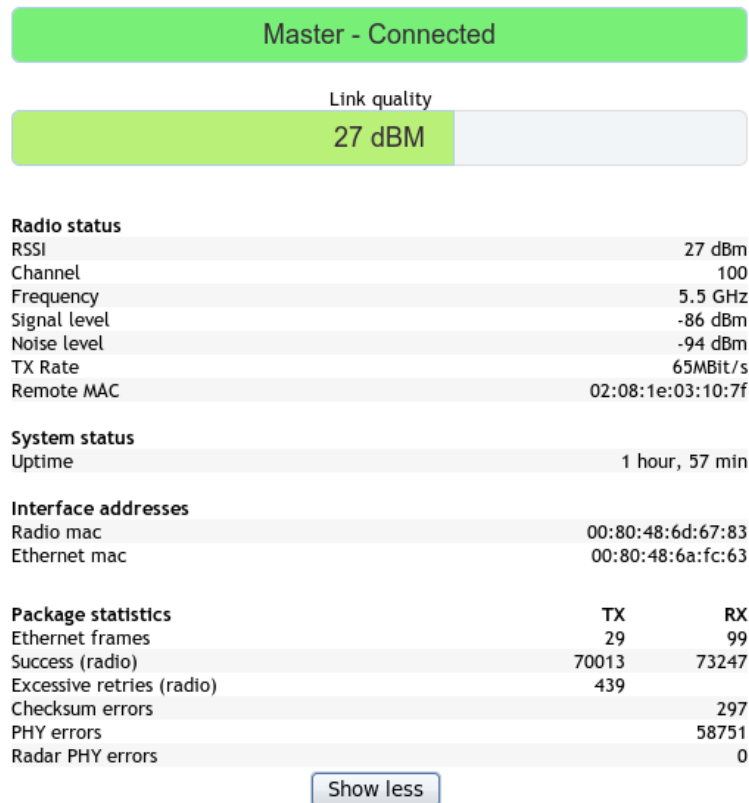


Figure 3.2: Expanded unit status

## Status information

### Radio status

**RSSI** Current signal strength above fictive noise floor of -95dBm.

**Channel** The current channel that the link is using.

**Frequency** The current frequency the link is using.

**Signal level** The current signal level in dBm.

**Noise level** The current thermal noise level measured by the radio card in dBm.

**TX Rate** The current transmit rate used by the link.

**Link uptime** The time the link has been connected and up.

**Remote MAC** MAC address of the currently connected remote unit.



**System status**

**Uptime** The time the unit has been up since last power up or re-boot.

**Interface addresses**

**Radio MAC** MAC address of the radio card.

**Ethernet mac** MAC address of the Ethernet interface

**Package statistics**

**Ethernet frames** This is the number of Ethernet packets sent over the radio link

**Success (radio)** This is the number of radio frames holding one or more Ethernet packets sent over the radio link.

**Excessive retries (radio)** This is the number of radio frames that has been dropped even after all retransmission attempts.

**Checksum errors** Total number of radio frames received with CRC error.

**PHY errors** Total number of PHY errors received by the radio card. PHY errors can be an indication on interference.

**Radar PHY errors** Total number of PHY errors received by the radio card that could be potential radar signals.

---

## 3.2 Link Diagnostic Tools

The “Tools” page contains diagnostic tools for optimizing your Trinity-100 Lite series link.

### Spectrum analyzer

The spectrum analyzer tool assist you in selecting a clear channel free from other OFDM radio traffic and with minimum amount of background noise.

The spectrum analyzer shows the amount of environmental RF energy for each available channel, classified as valid OFDM signals and other RF noise.

Refreshing the noise information requires the unit to disable the link and listen for a short time (less than a second) on each channel, this operation might take several minutes to complete.



**Spectrum Analyzer**

The spectrum analyzer shows the amount of environment RF energy as heard by the unit.

*Note: Wireless traffic will be interrupted during the time the analyzer is sweeping the spectrum to refreshing its data!*

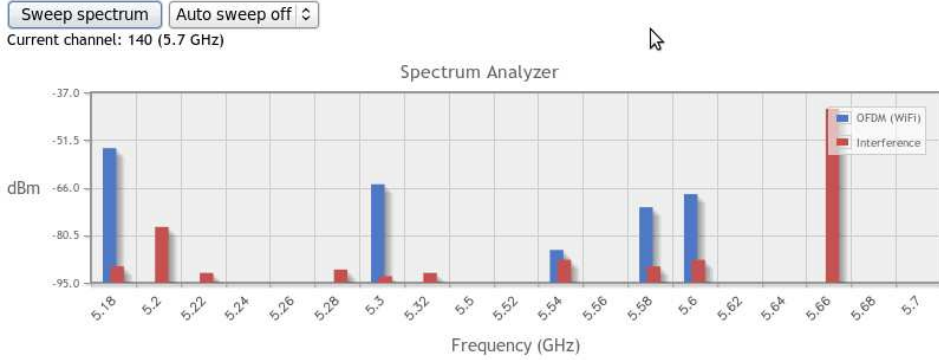


Figure 3.3: Spectrum analyzer

**Note** *The radio traffic will be disabled during the time the analyzer is running!*

**Speed test**

The integrated speed test will show you the available raw radio throughput ( $\pm 10\%$ ) of your link. The speed test takes approxi-

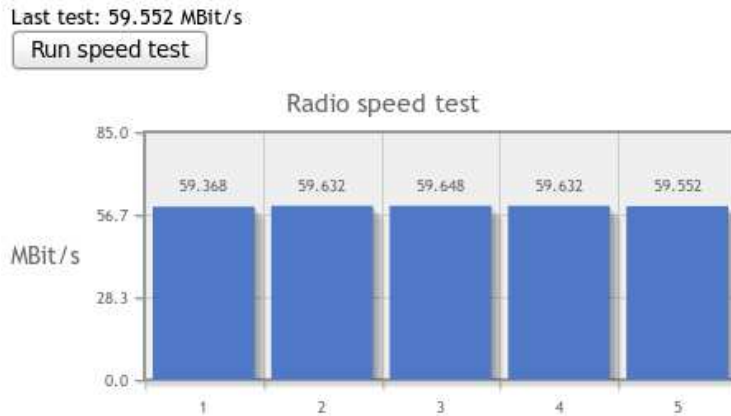


Figure 3.4: Speed test

mately 5-10 seconds to complete and does not interrupt normal traffic. The graph will the show the last 10 test runs so that you are able to detect improvements.



---

### 3.3 Firmware upgrading

The firmware in a Trinity-100 Lite series unit is upgradeable, new firmware brings both bug fixes and new features to the device. To upgrade the firmware navigate to the "Admin" tab in the web interface and select "Firmware upgrade", then follow the on-screen instructions to perform the upgrade.

It is recommended that you always have the same firmware version on both the master and slave unit.

**Note** *Never interrupt power during a firmware upgrade as this might damage the device*

**Tip** *Always upgrade the unit on the remote side of a link first when performing a firmware upgrade*

You can find the latest firmware version on the Repeatit web site at <http://www.repeatit.se/support>

---

### 3.4 Restore to defaults

There are three ways to restore a unit to its factory default settings.

On the "Admin" tab in the web interface you can choose to restore settings to both the factory default in a single operation. Note that the unit will automatically reboot after this.

On the "Configure tab" page you can load the factory defaults to look at them before applying the factory settings, see 2.2.

There is also Restore to default client software available at <http://www.repeatit.se/support>. This software will automatically detect any Repeatit units within the first few minutes after boot, and allows you to restore the unit to its default settings.

**Tip** *Use the RTD client to detect units for which you do not know its IP address*



# Support

Support as well as firmware updates for the Trinity product series can be obtained from Repeatits web site at <http://www.repeatit.se>, there you will also find product news, FAQ and other information related to our products.



# Technical Specifications

	Trinity-116 Lite	Trinity-123 Lite	Trinity-100 Lite
<b>Radio</b>			
Frequency Bands	5.150 - 5.845 GHz <sup>1</sup>	5.150 - 5.845 GHz <sup>1</sup>	5.150 - 5.845 GHz <sup>1</sup>
Channel widths supported	20 MHz	40/20 MHz	40/20 MHz
Capacity	50 Mbps aggregated throughput	100 Mbps aggregated throughput	100 Mbps aggregated throughput
Modulation	OFDM BPSK/QPSK/16QAM/64QAM	OFDM BPSK/QPSK/16QAM/64QAM	OFDM BPSK/QPSK/16QAM/64QAM
Max TX Power	23 dBm <sup>2</sup>	23 dBm <sup>2</sup>	23 dBm <sup>2</sup>
Max RX sensitivity	-97 dBm	-97 dBm	-97 dBm
Error Correction	FEC; k=1/2,2/3,3/4,5/6	FEC; k=1/2,2/3,3/4,5/6	FEC; k=1/2,2/3,3/4,5/6
Encryption	128 bit AES	128 bit AES	128 bit AES
Surge Protection	15kV	15kV	15kV
Antenna Protection	Internal DC Grounding	Internal DC Grounding	Internal DC Grounding
DFS	Yes	Yes	Yes
<b>Antenna</b>			
Gain	Internal typ. 16dBi	Internal typ. 23dBi	External (not incl.)
VSWR	max. 1.5:1	< 1.5:1	
3 dB Beam-Width, H-Plane	typ. 20°	typ. 10.5°	
3 dB Beam-Width, V-Plane	typ. 20°	typ. 10.5°	
Polarization	Vertical	Vertical/Horizontal	
Connector	N/A	N/A	N-female
<b>Ethernet Interface</b>			
Type	10/100BaseT Interface with Auto-negotiation (IEEE 802.3)	10/100BaseT Interface with Auto-negotiation (IEEE 802.3)	10/100BaseT Interface with Auto-negotiation (IEEE 802.3)
Number of Ethernet Ports	1	1	1
Framing/Coding	IEEE 802.3u	IEEE 802.3u	IEEE 802.3u
Traffic Handling	MAC layer bridging, self learning, 802.1q transparent < 2ms (typical)	MAC layer bridging, self-learning 802.1q transparent < 2ms (typical)	MAC layer bridging, self-learning 802.1q transparent < 2ms (typical)
Data Latency	< 2ms (typical)	< 2ms (typical)	< 2ms (typical)
VLAN ID for Management	Supported	Supported	Supported
QoS	Four Access Categories (AC) Voice, Video, Best Effort, and Background. Traffic classification according to WMM	Four Access Categories (AC) Voice, Video, Best Effort, and Background. Traffic classification according to WMM	Four Access Categories (AC) Voice, Video, Best Effort, and Background. Traffic classification according to WMM
Power over Ethernet Connector	12 - 48V DC (<6W typ.) RJ-45	12 - 48V DC (<6W typ.) RJ-45	12 - 48V DC (<6W typ.) RJ-45
<b>Management</b>			
Link Management Protocol	Web interface SNMP	Web interface SNMP	Web interface SNMP
NMS Application	RCS (Repeatit NMS)	RCS (Repeatit NMS)	RCS (Repeatit NMS)
Tools in web interface	Spectrum Analyser Speed Test	Spectrum Analyser Speed Test	Spectrum Analyser Speed Test
<b>Environment</b>			
IP Code	IP63	IP67	IP67
Temperature	-40° / +55° C	-40° / +55° C	-40° / +55° C
Size	250 x 210 x 80 mm	300 x 300 x 70 mm	210 x 174 x 81 mm
Weight per unit	1.1 Kg	1.9 Kg	1.7 Kg

<sup>1</sup>Allowed frequency range depends on the country of operation.

<sup>2</sup>Maximum allowed EIRP depends on the country of operation.





# Usage restrictions and legal information

This product contains radio equipment for which the use in several countries is subject to restriction, license or government authorization.



---

## European Union Notices

This product may be used in all EU countries (and other countries following the EU directive 1999/5/EC) without any limitation except for the countries mentioned below:

In the EU and other European countries, the 5-GHz bands have been made available for the use of wireless local area networks (LANs).

The Overview of Regulatory Requirements for Wireless LANs table provides an overview of the regulatory requirements applicable for the 5-GHz bands. Requirements for individual countries may change, Repeatit recommends that you check with your local regulatory agency for the latest status on regulations for 5 GHz fixed radio links.

### Overview of Regulatory Requirements

Frequency band	Max power level mW (EIRP)	Usage
5150-5350	200 (23 dBm)	Indoor ONLY
5470-5725	1000 (30 dBm)	Indoor and outdoor

The regulatory limits for maximum output power are specified in EIRP. The EIRP level of a device can be calculated by adding the gain of the antenna used (specified in dBi) to the output power available at the connector (specified in dBm). The usage of a power level above the maximum is illegal.



**Denmark**

In Denmark, the band 5150 - 5350 MHz is also allowed for outdoor usage.

**Italy**

The use of 5.8GHz (5725-5850 MHz) is forbidden in Italy.

**United Kingdom**

A license from *Ofcom* ([ofcom.org.uk](http://ofcom.org.uk)) is required for use of the 5.8GHz (5725-5850 MHz) band in the United Kingdom.



## Warranty

Repeatit AB, Hamngatan 33, S-172 66 Sundbyberg, Sweden, guarantee that our products do not have any defects regarding material or function upon delivery. All of Repeatits products are covered by a 12 month international warranty.

If during the time of warranty the product displays any defects regarding material or function, the products should be returned to your reseller, who will, according to their own judgment, either repair or replace the product according to the following conditions:

### Conditions

1. The warranty is only valid in combination with an original receipt issued by the reseller at the date of delivery or sale. The receipt needs to contain the products serial number or similar identification.
2. If Repeatit repairs or replaces the product, the repaired or replaced product will be covered by the original warranty during the remainder of the guarantee period. During repair, some parts might be replaced. These parts are then the property of Repeatit AB.
3. The warranty does not cover normal wear and tear, faulty usage or handling, or other usage other than the one described by Repeatit AB. The warranty does not cover defects caused by accidents.
4. The warranty is not valid if service is performed on the product by a, by Repeatit non-authorized person or company.
5. The warranty is not valid if any products that are not Repeatit original accessories are used with the product.
6. There are no warranty, written or oral, other than this printed warranty.

